

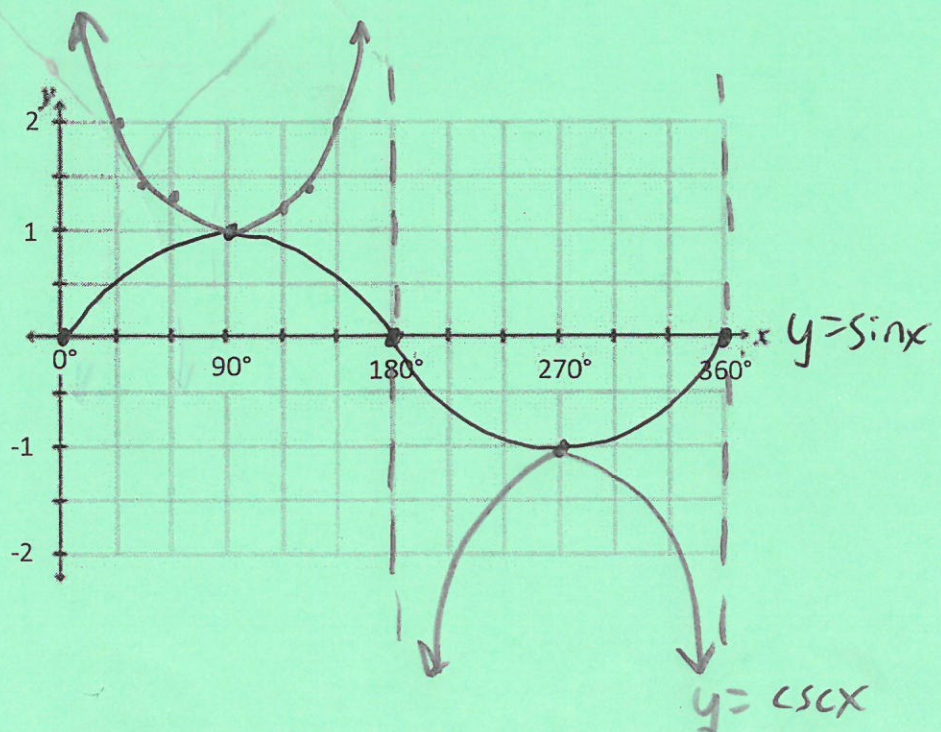
# Graphing Trig Functions Basics

Name Key

Name the 5 critical points for all trig functions (as well as 30, 45, and 60 degrees). Then graph sine, cosine, and tangent functions along with their reciprocal functions on the graphs provided (make basic functions solid and reciprocals dashed).

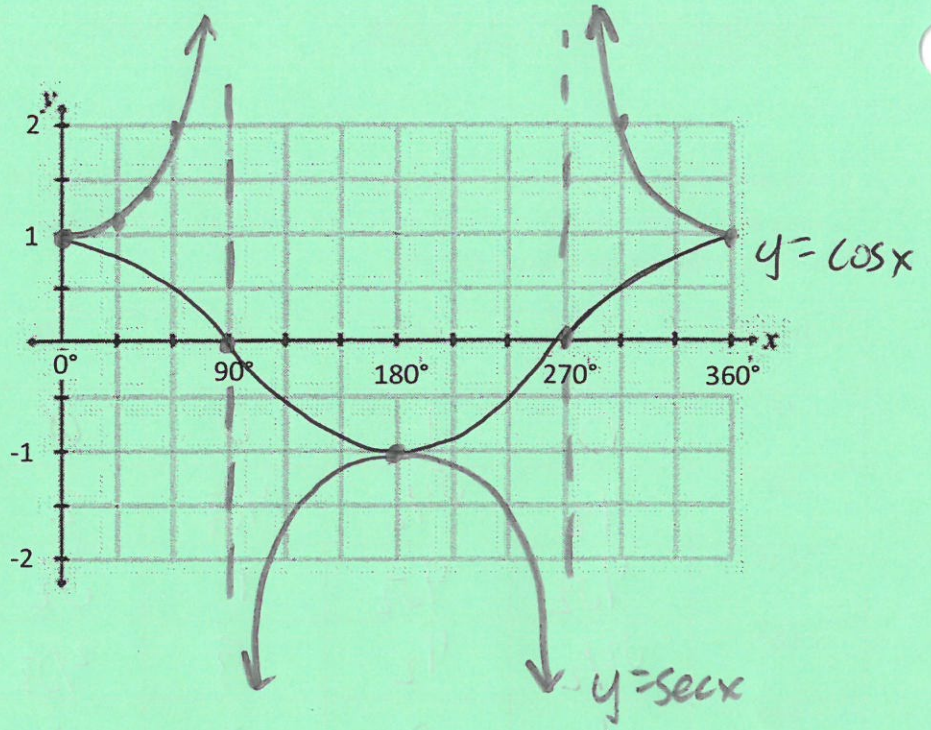
Critical Pts	Sin	Cos	Tan	Csc	Sec	Cot
0°	0	1	0	∅	1	∅
30°	1/2	√3/2	1/√3	2	2/√3	√3
45°	1/√2	1/√2	1	√2	√2	1
60°	√3/2	1/2	√3	2/√3	2	1/√3
90°	1	0	∅	1	∅	0
180°	0	-1	0	∅	-1	∅
270°	-1	0	∅	-1	∅	0
360°	0	1	0	∅	1	∅

Sine and Cosecant





Cosine and Secant



Tangent and Cotangent

